

# Achieve Robust Data Exchange, Aggregation, and Data Management

## NextGen® Health Data Hub

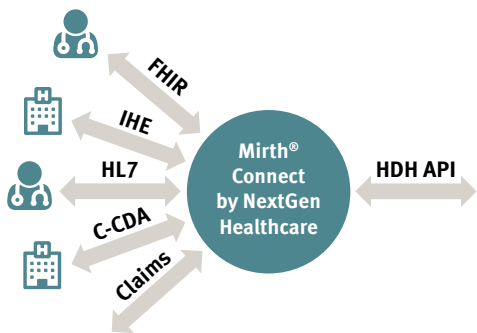
Healthcare providers need a full picture of a patient's medical history to make the best possible clinical decisions. Patients increasingly expect their care teams to have this complete picture. The necessary data can reside in many disparate EHR systems—ambulatory, inpatient, or post-acute care.

As a cost-effective cloud-based data aggregation platform, NextGen Health Data Hub (HDH) ensures reliable system-wide connectivity and empowers data-driven innovations for healthcare information and delivery organizations.

By providing efficient access to aggregated data, care teams can quickly access meaningful insights. These insights, obtained at the right time, within the right workflow, can help save lives.

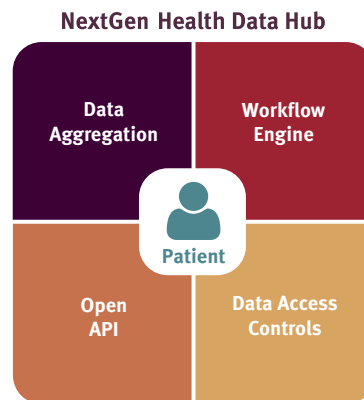
## Integration, data management, and distribution overview

**Integration as a service:** NextGen Healthcare manages connections to all EHRs and data sources



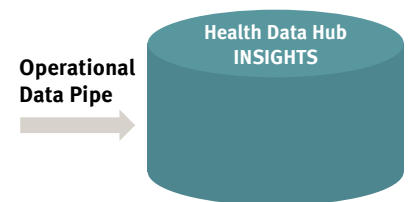
- Integrations built, managed, monitored, and hosted by NextGen Healthcare
- Mirth Connect channel library provides out-of-the-box connectivity to lead EHRs for ADT, ORU, CCDA, IHE, X12, and more
- Custom internal feeds are supported

**Data management as a service:** Orchestration and normalization



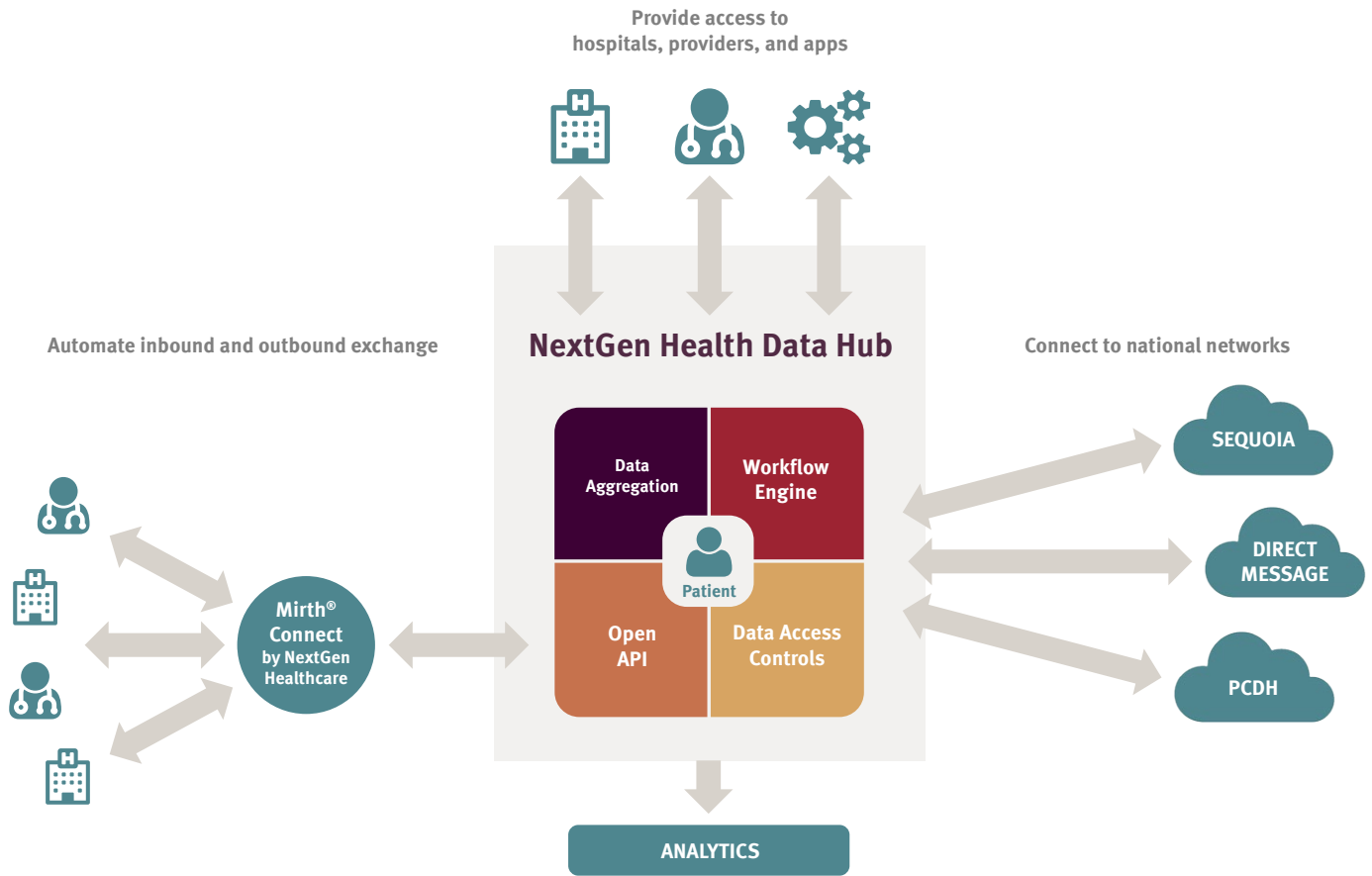
- Built-in clinical normalization, parsing, and message orchestration
- Delivery of interop workflows, encounter notifications, and national network integration
- Data governance and segmentation

**Persistence and distribution:** Data warehousing, segmentation, and sharing



- Dashboarding and data warehouse as a service with built-in sharing for data workloads
- Support for custom internal feeds and domain level persistence
- Contextual-based formatting for data access and reporting

# Keep patients at the center of health data exchange



### Data Access Controls

- Roll-based access framework**  
Feature and clinical content  
Full API access
- Consent Management**  
Granular control per data source
- Data Constraints**  
42 CFR Part 2 Compliant – BH  
Sensitive and confidential data management

### Open API

- An API first approach enables full system, configuration and data access
- API use case catalog to expedite adoption and implementation, facilitate innovation

### Data Aggregation

- Integrated EMPI
- Clinical Content
- Encounters + Patients
- HL7 2.x, CDA, Custom

## Data access controls: integrate behavioral health data into clinical workflows

The absence of behavioral health data in primary care can lead to an incomplete picture of a patient's health and impact the quality of care.

These data gaps can be mitigated when behavioral health data is integrated into primary care EHR technology for providers to efficiently access at the point of care.

HDH provides a 42 CFR Part 2 Compliant consent framework, which allows providers to access protected data along with clinical content securely.

### Keys to effective data management

**Data Access:** Consent management and protected data constraints

**Data Platform:** Patient matching, configurable data views, data normalization, and master data management

**Delivery:** Automated workflows and patient subscriptions, business and clinical workflow integration

## Open API: access to all platform configurations and much more

RESTful API has become the future standard in interoperability. HDH was developed with open API access to all platform configurations, clinical content, user activity, and audits. Automated workflows to data partners can also be implemented and managed from HDH RESTful APIs.

Automated workflows with HDH RESTful APIs enable healthcare organizations to:

- Send encounter notifications to providers and care teams
- Load and update patient panels
- Attach clinical content to encounter notifications (CoP)
- Execute patient discovery and document query/retrieval workflows (national networks)
- Incorporate SDOH data into patient(s) records

### Keys to better data access

**Governance:** Use case catalogs, scalable access management

**Data Platform:** Master data and patient matching (extensible and configurable)

**Delivery:** Self-service with business and clinical workflows

### ADDED BENEFITS

#### Mirth Connect Integration Engine

- HDH Channel Library
- HDH API to FHIRr4 Mapping

#### Strategic Advisory Services

Data Governance and Consent Management

### API CAPABILITIES

#### Health Data Hub RESTful API Resources

- Patients
- Clinical Items
- CDA Generation
- Clinical Feeds
- Encounters
- Providers
- Consent & Data Access Constraints
- Automated Workflows
- User Administration

#### Mirth Connect Integration Engine

- HDH API Connectors
- HDH API to FHIRr4 Mapping
- Custom

#### Strategic Advisory Services

Advanced API Workflow, Custom API Bundles

#### HDH API SDK

API Library and Integrated Swagger UI

# Data aggregation: provide a single source of truth for community data

As market demand grows for robust data sharing, aggregation, and data management, a modern data aggregation platform can provide comprehensive, continuous access to patient health data.

HDH provides healthcare information and delivery organizations with system-wide connectivity. This ensures access to complete patient records at the point of care and normalizes data sets across disparate systems to create consumable and actionable content.

## Keys to realizing opportunity

**Governance:** Data quality reporting and profiling

**Data Platform:** Source system connectors, integrated data quality, and declarative dataflows

**Delivery:** Self-service with business and clinical workflows

## FEATURES

- Role-and-organization-based privacy controls (consent, behavioral health, and other sensitive data)
- Data governance through a robust access control framework can be applied at the source, role, or clinical item level
- Open API: Developers can access live data and system configurations via APIs
- Patient identity built into core matches records across applications and organizations
- Encounter notification service included to enhance the delivery of ToC content and alerts

# BETTER STARTS HERE.

Contact us at **855-510-6398** or email **results@nextgen.com**