



Network Management from NextGen Population Health

Gain insight into where patients receive services and find opportunities to improve referral patterns

A precise, valuable view into healthcare activity

Network Management provides information on where patients receive healthcare services, including specialty care, at the population and patient level. This makes it easy to gain better insight into referral patterns. Compared to other resource utilization tools, Network Management enables a unique view of patient healthcare activity.

In addition, the Network Management tool provides specific data on services and service locations. For example, it can provide information on which patients receive care from a specific cardiologist outside of the preferred provider network—**and how much this out-of-network service costs your organization**. This extra cost may be referred to as network leakage or referral leakage.

Use this information to identify opportunities to direct patients to providers within a preferred network. Develop a strategic approach to addressing financial losses that result from out-of-network leakage.

The *Network Management* tool is part of NextGen® Population Health.

Powered by insurance payer claims data, it:

- Enables quick, easy analysis of costs for attributed patients of a defined provider network; for example, patients of a clinically integrated network (CIN) or accountable care organization (ACO)
- Gives important insight into in-network vs. out-of-network utilization
- Offers quick drill down capability—easily navigate from a view of the patient population to data for a specific patient

Configuration options

There are two options for configuring the Network Management tool within NextGen Population Health.

Dual segment configuration

This configuration option categorizes claims data into two segments: in-network and out-of-network. A defined list of preferred facilities and providers is used to flag services as in-network. Everything else is considered out-of-network.

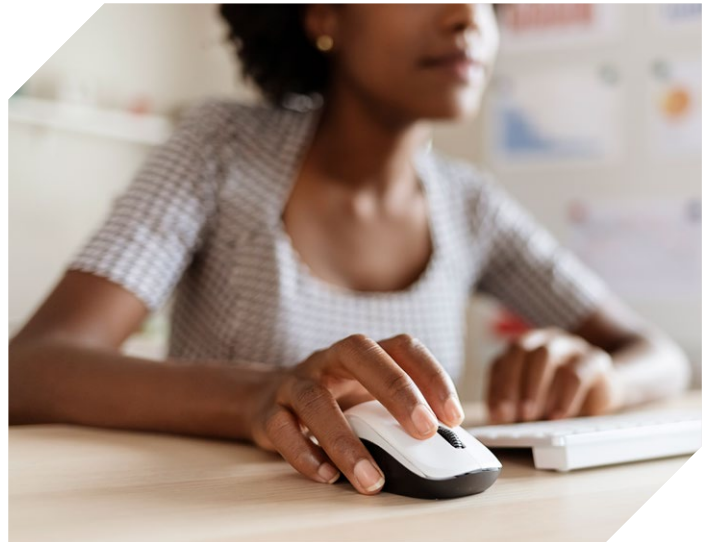
This configuration is a great place to start when using the Network Management tool for the first time. It delivers excellent value, but compared to full segment configuration, requires less implementation time.

Full segment configuration

This configuration option enables categorization of claims data into multiple segments to organize information more precisely. For example, the provider network can be categorized into multiple levels.

Also, an exclusion category can be created to reduce consideration of data which does not affect out-of-network leakage, such as:

- Emergency room visits
- Out-of-area services
- Select specialties; for example, if no options for care exist within the network



Next steps

Experts at NextGen Healthcare will work with your medical practice so you get the greatest possible benefit from the Network Management tool.

If you are a NextGen Healthcare client, contact your account manager for more information. If you do not currently use NextGen Healthcare solutions, contact us at **855-510-6398** or email **results@nextgen.com**.

BETTER STARTS HERE.

Contact us at **855-510-6398** or email **results@nextgen.com**