



# NextGen Population Health Data Warehouse

Take analytics and reporting beyond the standard

Get more flexible data access with NextGen® Population Health Data Warehouse, in synergy with NextGen® Population Health.

Organizations may need to go beyond standard measures and analytics built into existing software applications. Stakeholders often require data access and flexibility to:

- Manage complex, enterprise-level clinical and business challenges
- Fine-tune operations based on more precise financial and clinical insights
- Meet the reporting demands of payers or funding providers and government agencies

NextGen Population Health Data Warehouse gives you direct access to data elements and insights that are part of NextGen Population Health.

## Extend your population health capabilities:

- Gather your own data in custom built SQL queries
- Reorganize data for your organization's specific needs
- Leverage data for use in any business intelligence application

**Use the NextGen Population Health Data Warehouse to extract greater value from your practice data. Get data analysis tailor-made to the needs of your practice.**

## Business requirements

To receive the greatest benefit from NextGen Population Health Data Warehouse:

- Your practice should have qualified analysts skilled in structured query language (SQL)
- Analysts should have experience working in complex data environments
- You must be an existing NextGen Population Health client

NextGen Healthcare data scientists, engineers, and clinicians will work with you to enable effective utilization of NextGen Population Health Data Warehouse.

**NextGen Population Health Data Warehouse** is built on Amazon Redshift, a fully managed warehouse service. Redshift is the world's fastest, most widely used cloud-based data warehouse.

## Examples of data elements and insights you can access

- EHR data such as patient demographics, vital signs, problems, allergies, medications, encounters, orders, results, immunizations, and more
- Claims data such as member demographics, eligibility, and details of facility, professional, and pharmacy claims
- Paid claims and allowed amounts after application of payer adjudication rules
- Relationship data such as patient-provider attribution, providers' organizational affiliations, and patient cohort information such as participation in clinical initiatives, listing in condition registries, and membership in payer programs
- Population health analytics such as utilization data, quality measure scores, and risk factor measures; for example, Johns Hopkins ACG<sup>®</sup> System scores. Data is accessible from the population level to the individual patient

## 3 data warehouse use cases

Here's how three medical practices use customization features to meet their unique needs.

### ① Fine-tune patient satisfaction surveys

An accountable Care Organization (ACO) wants to send out patient satisfaction surveys. They seek to fine-tune their selection of patients who receive surveys so that results are more meaningful. The ACO uses the NextGen Population Health Data Warehouse to:

- Find patients who were likely to have visited their primary care physician in the past six months based on select evaluation and management (E&M) procedure codes
- Select the most recent address information on record
- Exclude patients whom it would be inappropriate to send a survey—for example, based on place-of-service data, patients who were hospitalized are excluded from the survey

#### Results

Surveys are only sent to patients who have completed primary care visits and are available to respond.

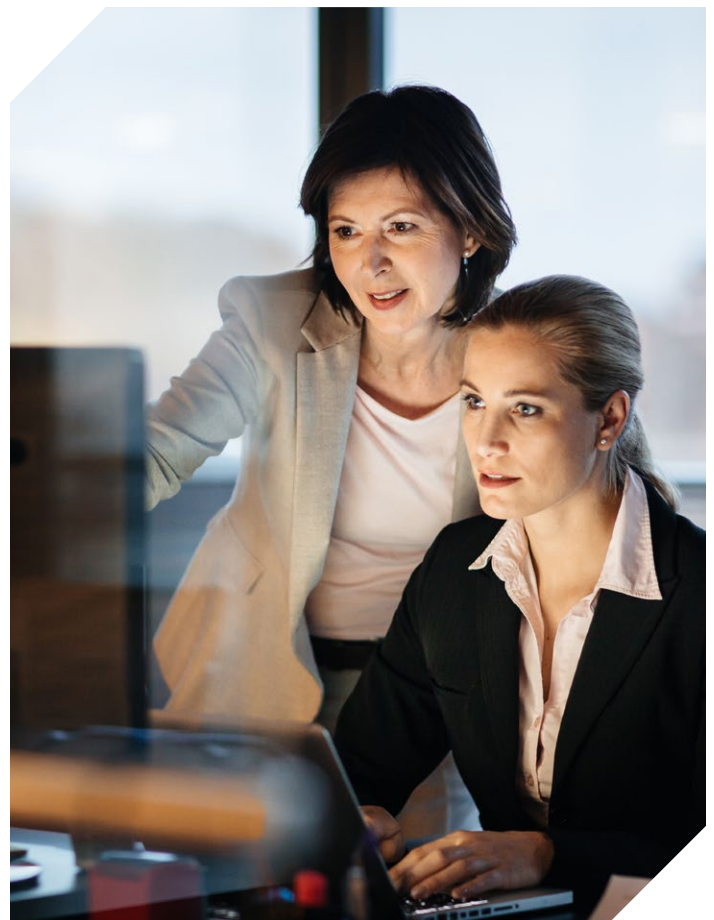
### ② Measure effectiveness of behavioral interventions

A provider organization began providing behavioral health services in select clinics. Now they want to measure how effective these services are in helping patients with high-risk medical conditions who also have behavioral health concerns. The provider organization uses the NextGen Population Health Data Warehouse to:

- Select patients with depression and diabetes co-morbidities
- Leverage attribution information to associate patients with the appropriate clinics and providers
- Establish a cohort for patients engaged in behavioral health services
- Use time frame data to perform before-and-after analysis by comparing utilization during different periods of time

#### Results

The provider organization is able to monitor whether behavioral health clinics are effective in reducing the number of emergency department visits by patients with diabetes and depression.



### ③ Evaluate completeness of HCC coding

A provider organization wants to measure completeness of hierarchical condition category (HCC) coding as part of evaluating physician performance in a Medicare Shared Savings Program.

Medicare Shared Savings Programs often factor HCC coding into payment. More money may be allocated to patients deemed at higher risk.

This provider organization seeks to determine the percentage of each provider's Medicare patients with gaps in HCC coding that could be closed. They use the NextGen Population Health Data Warehouse to:

- Find patients whose previous diagnoses indicate they may be eligible for HCC coding but who've not been identified year to date (called HCC drop offs)
- Identify patient-provider attribution relationships, so HCC coding gaps could be aggregated and associated with the correct provider
- Access provider organization information so analysis can be performed at the practice group level as well as the provider level

#### Result

The provider organization is able use HCC coding completeness as a performance measure in analysis of participation in Medicare Shared Savings Programs. They identify opportunities to close gaps in HCC coding.

“Customized data assets from NextGen Population Health Data Warehouse gave us proof that our quality measure performance was better than reported by the payer. This afforded us additional payout in our shared savings program.”

NextGen Healthcare Client, Vice President, Information Technology

### Make analytics more meaningful to your practice

NextGen Population Health Data Warehouse allows you to customize performance reports to address specific clinical and financial challenges. If your medical practice has implemented NextGen Population Health, you can be up and running on the NextGen Population Health Data Warehouse in a matter of days.\*

## NEXT STEPS.

If you are a NextGen Healthcare client, contact your account manager for more information. If you do not currently use NextGen Healthcare solutions, contact us at **855-510-6398** or email **results@nextgen.com**.

\*If your practice has not fully implemented NextGen Population Health, implementation will take longer.

PH\_110323\_HealthDataWarehouse

Copyright © 2023 NXGN Management, LLC. All Rights Reserved.  
NextGen is a registered trademark of NXGN Management, LLC.  
All other names and marks are the property of their respective owners.

[nextgen.com](https://www.nextgen.com)

